

# Kvaliteetsete andmetega paremate tulemusteni

**Ekke Piirisild**

Construction Industry Readiness Specialist

Autodesk Ltd (UK)

# Safe Harbor Statement


Each of the presentations today will contain forward-looking statements about our strategies, products, future results, performance or achievements, financial, operational and otherwise, including statements about our strategic priorities, business model transition, and guidance for the first fiscal quarter and fiscal year 2020; our long term financial and operational goals; our M&A strategy; our capital allocation initiatives; and our stock repurchase program. These statements reflect management's current expectations, estimates and assumptions based on the information currently available to us. These forward-looking statements are not guarantees of future performance and involve significant risks, uncertainties and other factors that may cause our actual results, performance or achievements to be materially different from results, performance or achievements expressed or implied by the forward-looking statements contained in these presentations, such as a failure to maintain ARR, ARPS, subscriptions, billings, revenue, deferred revenue, margins and cash flow growth; difficulty in predicting those financial and performance metrics; failure to maintain spend management; failure to successfully integrate acquisitions and manage transitions to new business models and markets, including our efforts to expand in construction and manufacturing, and attract customers to our cloud-based offerings; failure to successfully expand adoption of our products; and negative developments in worldwide economic or political conditions.

A discussion of factors that may affect future results is contained in our most recent Form 10-K and Form 10-Q filings available at [www.sec.gov](http://www.sec.gov), including descriptions of the risk factors that may impact us and the forward-looking statements made in these presentations. The forward-looking statements made in these presentations are being made as of the time and date of their live presentation. If these presentations are reviewed after the time and date of their live presentation, even if subsequently made available by us, on our website or otherwise, these presentations may not contain current or accurate information. We disclaim any obligation to update or revise any forward-looking statement based on new information, future events or otherwise.

## Non-GAAP Financial Measures

These presentations include certain non-GAAP financial measures. Please see the section entitled "Reconciliation of GAAP Financial Measures to non-GAAP Financial Measures" in the Appendices attached to the presentations for an explanation of management's use of these measures and a reconciliation of the most directly comparable GAAP financial measures.



An aerial photograph of a construction site, heavily tinted with a blue color. The image shows various construction materials, including large stacks of bricks or blocks, and several white vans parked in the upper left area. In the lower center, there is a large, rectangular concrete foundation or early structure of a building. The overall scene is busy and industrial.

# Autodesk Construction Solutions

The logo for Paremad Tulemused, consisting of three stacked chevron shapes pointing upwards. The top chevron is white, the middle one is a light blue, and the bottom one is a light orange or tan color.

Paremad  
Tulemused

# Autodeski Strateegia Ehituses





<https://bim360resources.autodesk.com/videos/construction-management-autodesk-construction-solutions>



**“ It is not the strongest of species that survives, nor the most intelligent that survives.**

**It is the one that is most adaptable to change**

*- Charles Darwin*



9,800,000,000



200,000







13,000





1%

Global Construction

3.6%

Manufacturing



A low-angle, upward-looking photograph of several modern skyscrapers. The buildings feature glass facades and some have distinctive architectural details like a curved corner or a grid-like facade. A small airplane is visible in the clear blue sky between the buildings. The overall color palette is dominated by blues and greys, with a warm brownish-gold section on the left building.

464%











More  
Better  
Less



assemble

PlanGrid

BUILDINGCONNECTED

# Autodesk Construction Solutions

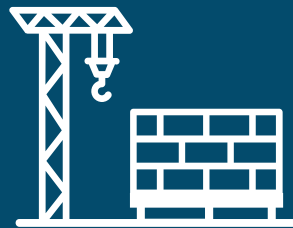
Deliver a comprehensive, integrated platform that seamlessly connects the office, the trailer, and the field.



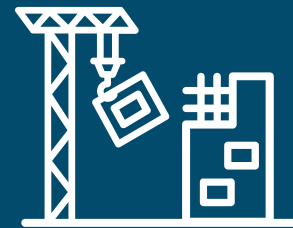
DESIGN



DESIGN  
COLLABORATION



PRECONSTRUCTION



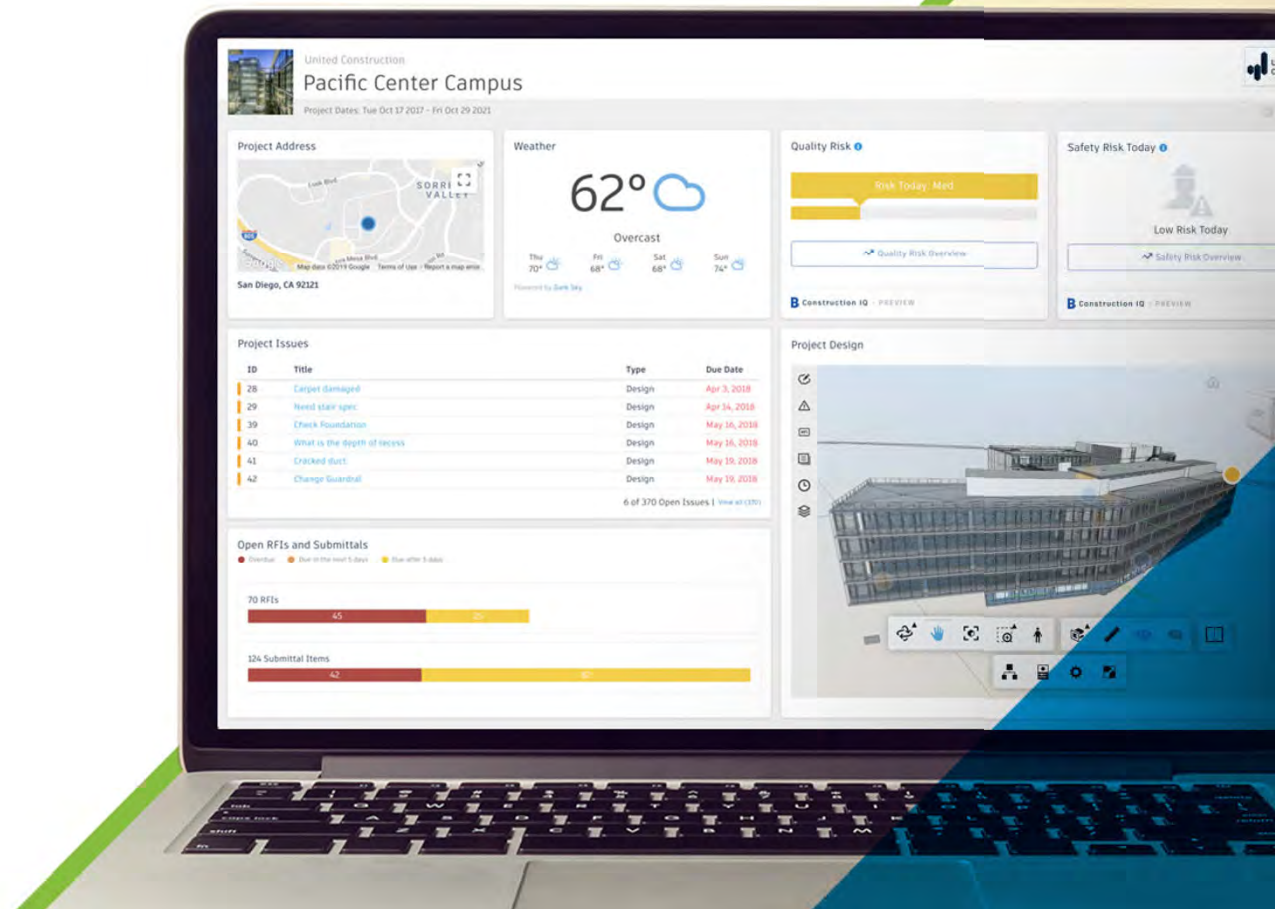
CONSTRUCTION



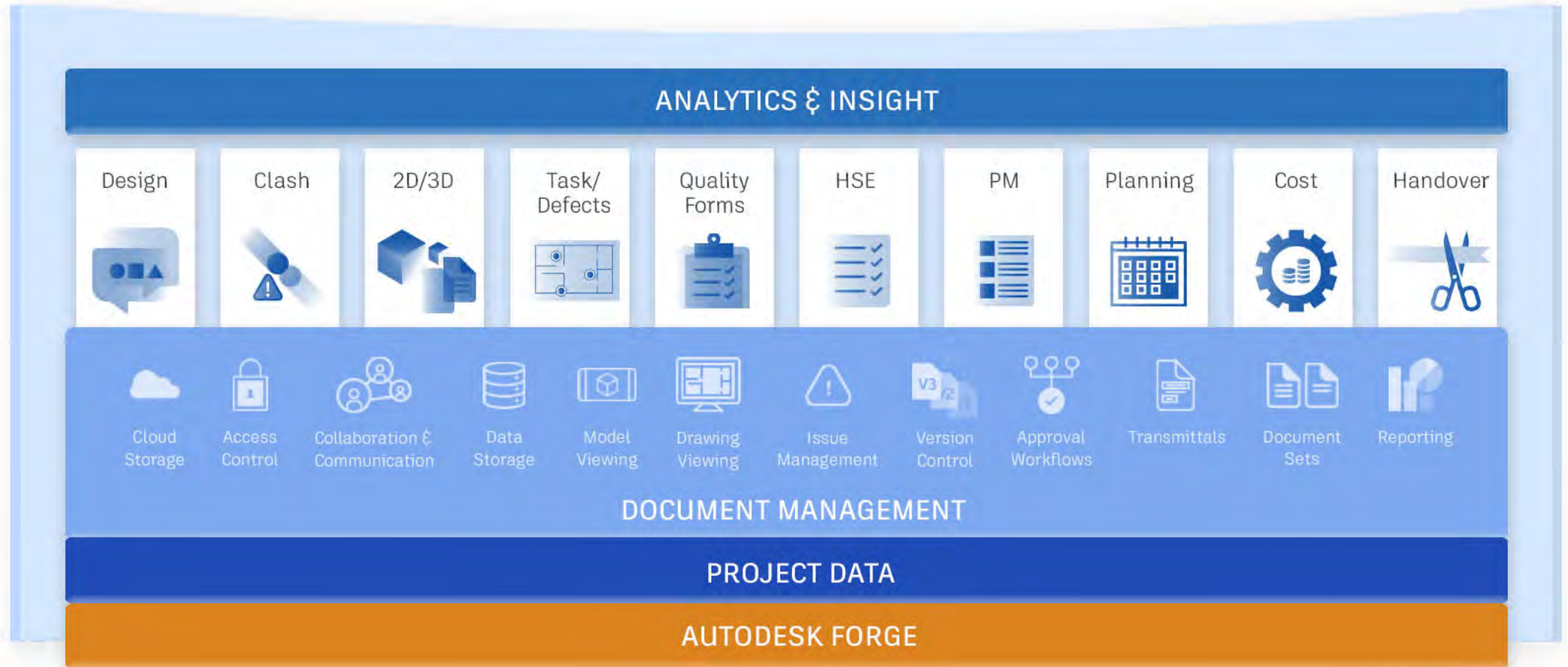
TURNOVER &  
OPERATIONS

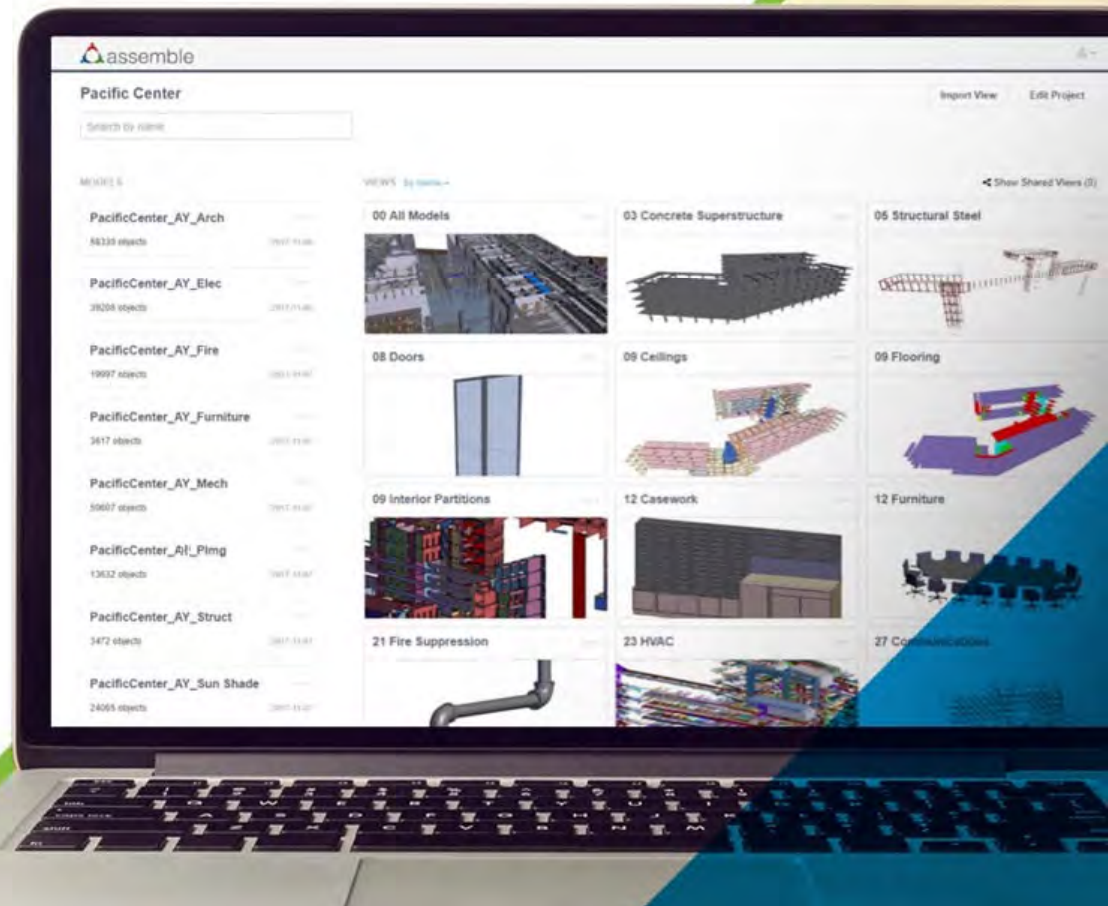


# AUTODESK® BIM 360™



# BIM 360 PLATFORM











← Back to Projects

### 201 Spear 2nd and 13th Floor

BID PACKAGES MESSAGES FILES INFORMATION BID FORMS TEAM REPORTS

Filter bid packages Find

<input type="checkbox"/>	Lead	Code	Name	Bids Due	Companies	Viewed	Bidding	Bids	Estimated Cost	Soft Awarded Company
<input type="checkbox"/>		01100	Expansion Joints	02/17/17 12:00PM PST	9	6	3	2	\$125,000	Reliant Com...
<input type="checkbox"/>		01200	Concrete	02/17/17 12:00PM PST	6	4	4	3	\$165,500	<a href="#">Level bids »</a>
<input type="checkbox"/>		02211	Demolition	02/17/17 12:00PM PST	7	7	4	3	\$201,000	Mack Brothers
<input type="checkbox"/>		01300	Metal Fabrication	02/17/17 12:00PM PST	12	4	3	2	\$180,000	Initech Steel
<input type="checkbox"/>		11200	Glass & Glazing <small>Not published</small>	02/17/17 12:00PM PST	—	—	—	—	\$19,800	<small>NO BIDS</small>
<input type="checkbox"/>		04410	Waterproofing	02/17/17 12:00PM PST	11	9	7	2	\$39,600	Everest Water...
<input type="checkbox"/>		06100	Unit Masonry	02/17/17 12:00PM PST	8	2	2	1	\$52,200	<a href="#">View details</a>
Total					62	37	26	16	\$783,100	





# Autodesk Portfolio in Action

“As users of BIM 360, Assemble, PlanGrid, and BuildingConnected, we have fully embraced the digitisation of construction. Using the complete portfolio, Clayco has seen a **60-70% reduction in the time it takes to access the most up to date project information**, and the time that it takes to make critical project decisions.”

Tomislav Zigo  
Vice President, Clayco Inc.

**CLAYCO**

THE ART & SCIENCE OF BUILDING











# DIGITISE

•





**DIGITISE**

**INTEGRATE**





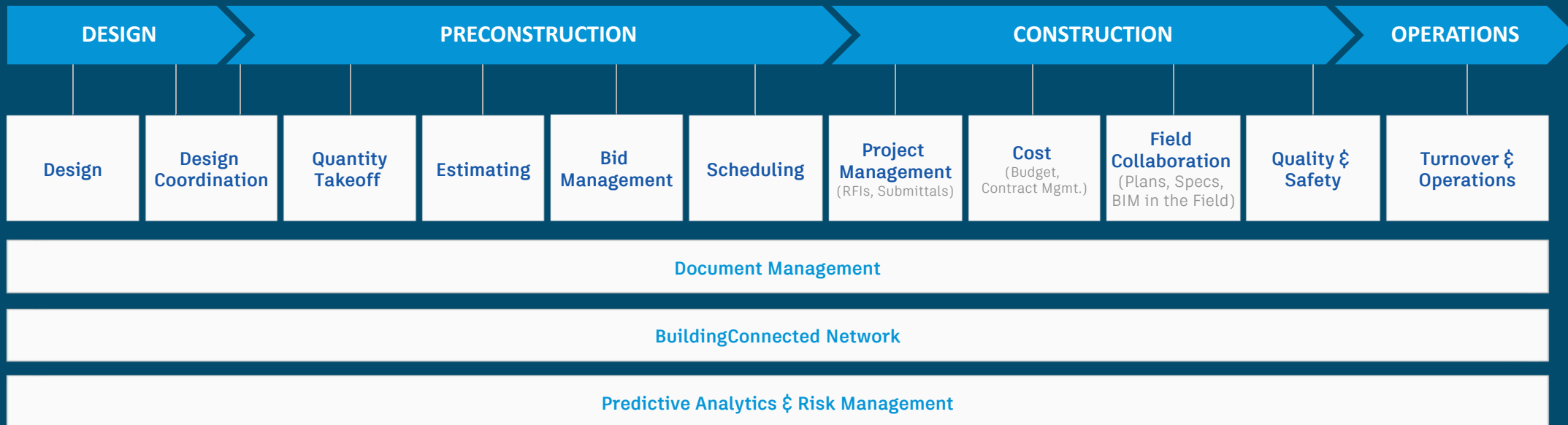
**DIGITISE**

**INTEGRATE**

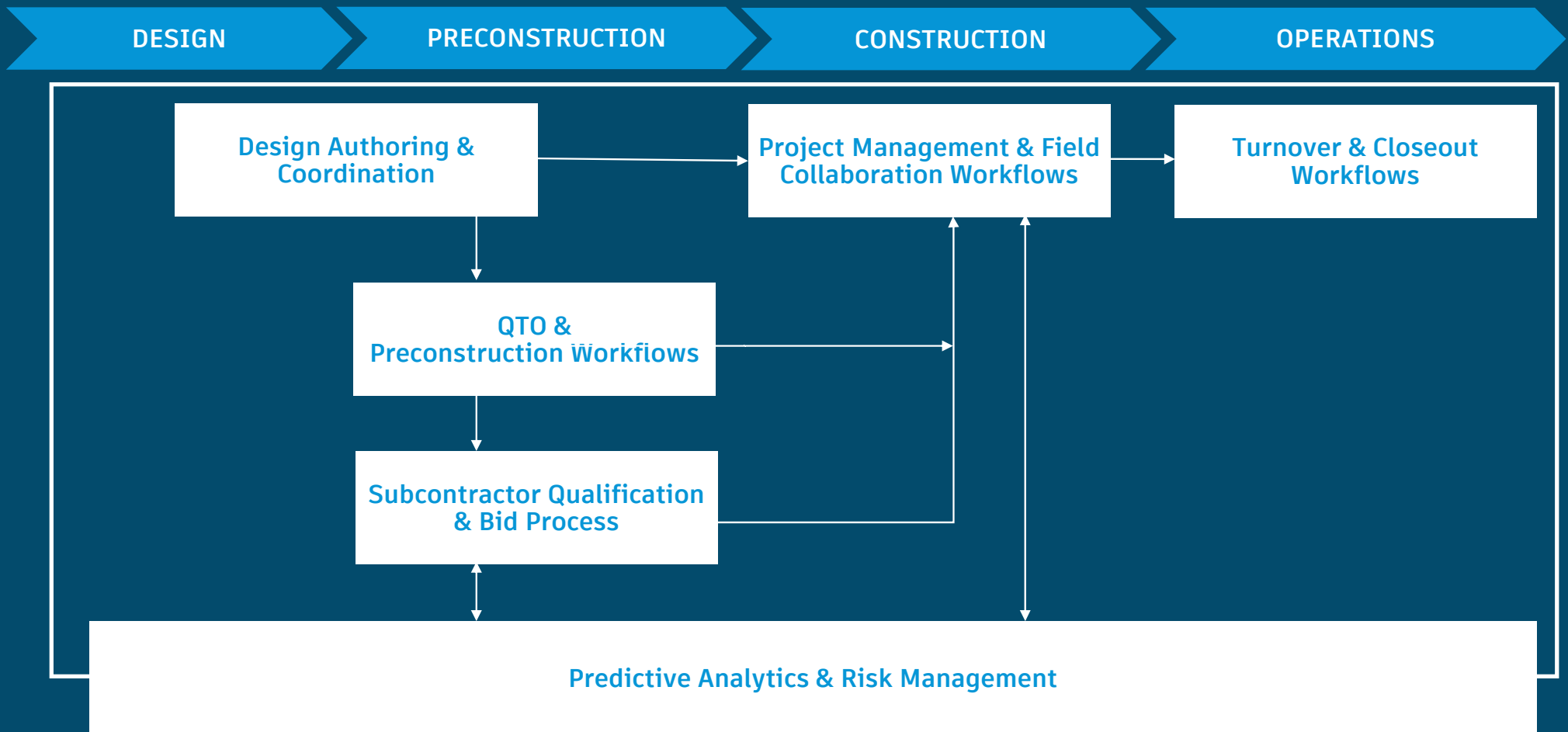
**PREDICT**



# Autodesk Construction Portfolio



# Connected Construction Workflows







Tee paremate tulemusteni







Suurendata Tulusid



Vähendada Kulusid



Vähendada Riske





# Ehituse Mõjutegurid

Mis valdkonnad mõjutavad äritulemusi?

Kvaliteet

Aeg

Eelarve

Ohutus

Projektide  
Võitmine





Kvaliteet

Aeg

Eelarve

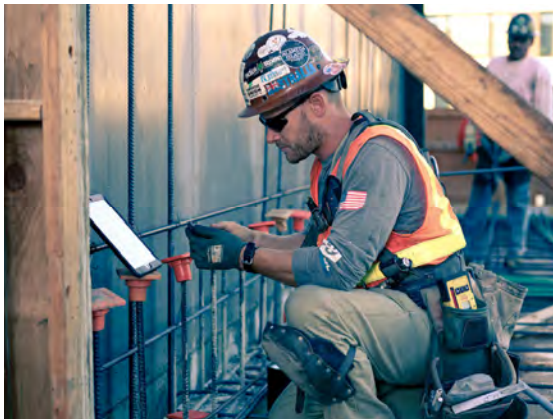
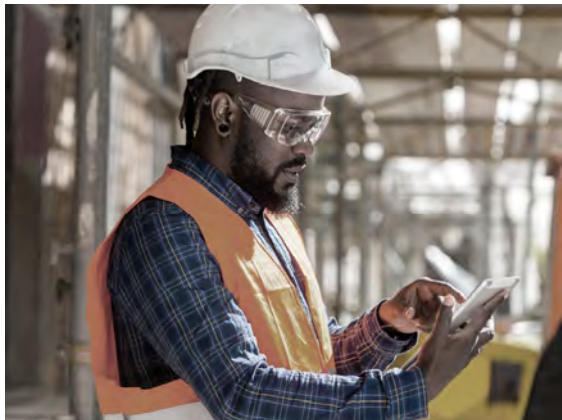
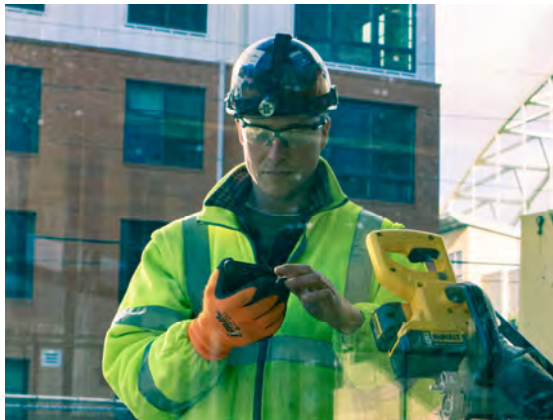
Ohutus

Projektide  
võitmine

- Vähendada ehitusvigasid projekti üleandmisel.
- Vähendada tööde ümbertegemise vajadust.
- Lahendada ehitatavuse probleemid enne platsile jõudmist.
- Parandada kliendikogemust.
- Laieneda uutele turgudele
- Parandada hangetel osalemise efektiivsust
- Võita rohkem hankeid
- Lõpetada rohkem projekte edukalt ja riskivabalt
- Vähendada kindlustusmakseid
- Vähendada ehitusõnnetusi
- Luua optimaalseid ehitusgraafikuid
- Parandada eelarvestuse täpsust

+ + +







# CONSTRUCTION TECH MARKET MAP



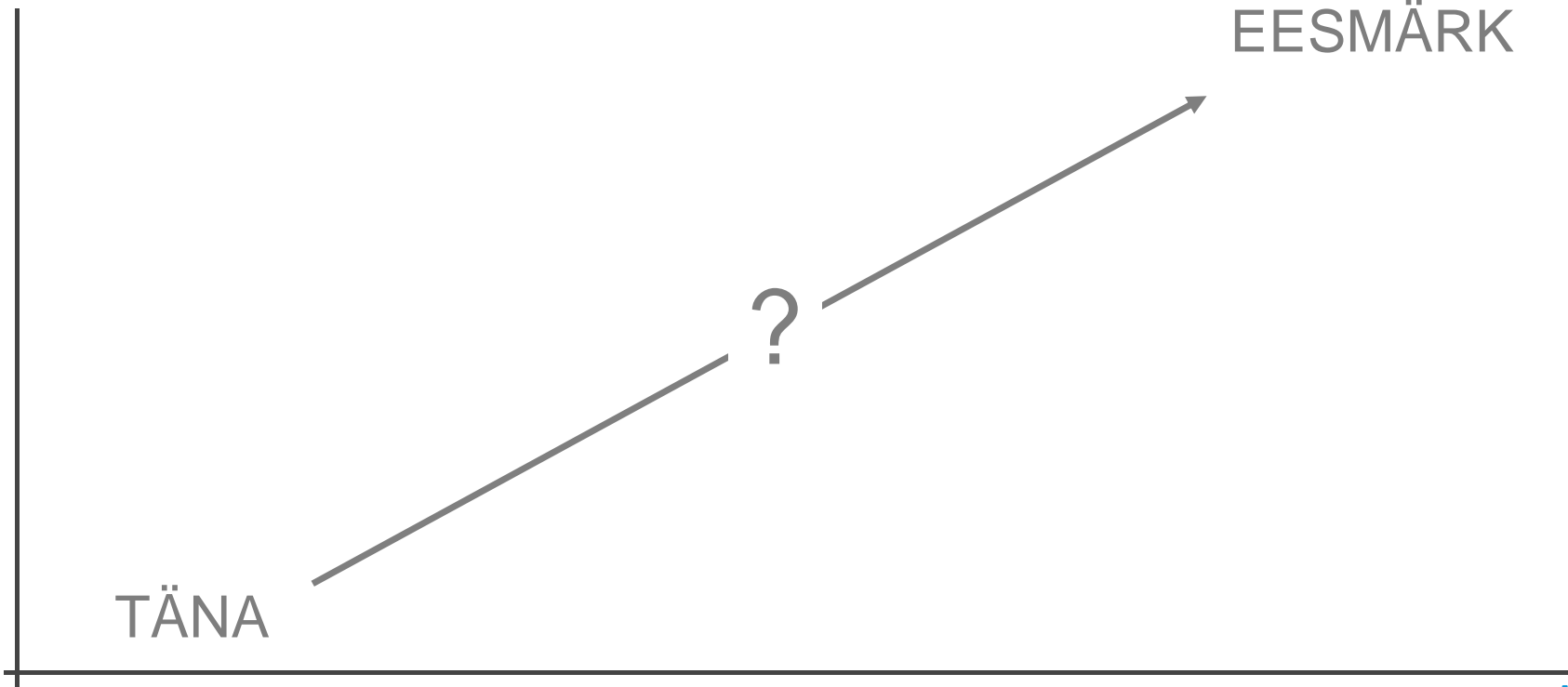
TEHNOLOOGILINE  
VÕIMEKUS

TÄNA

?

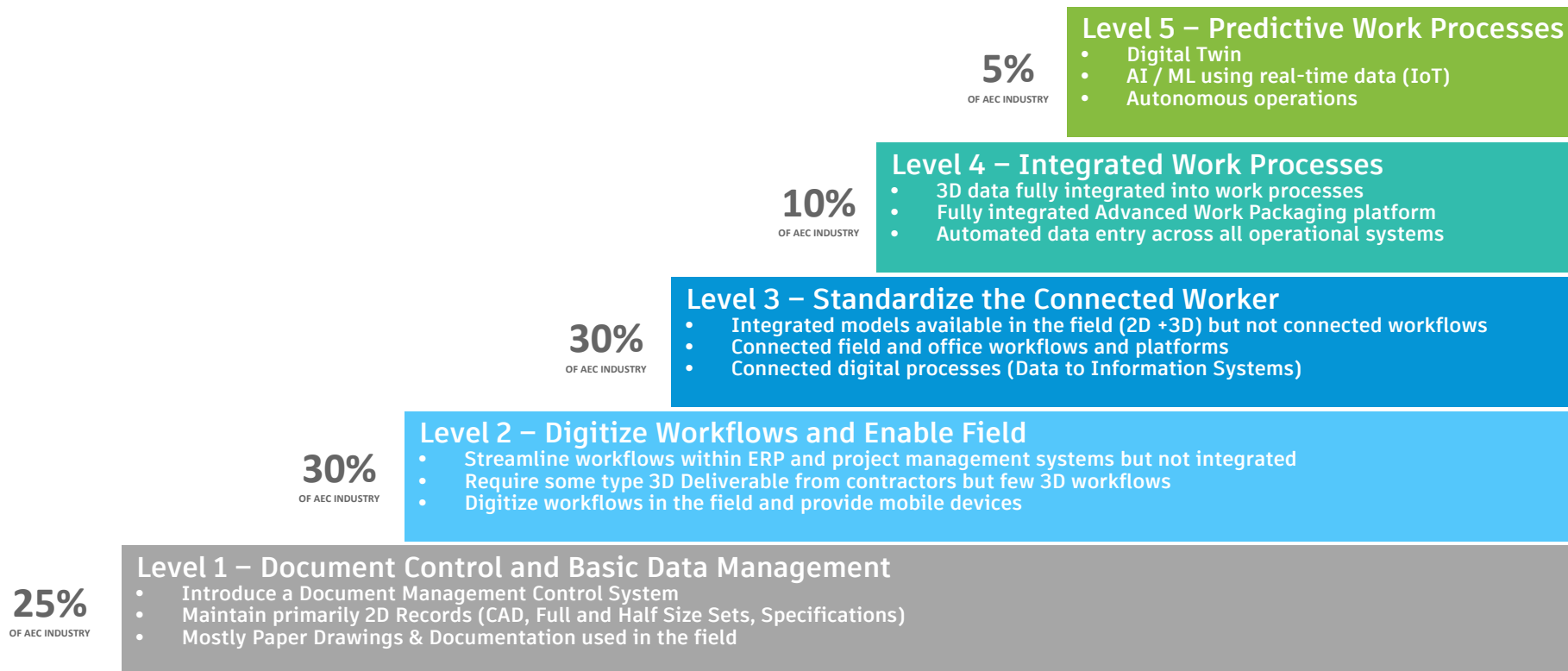
EESMÄRK

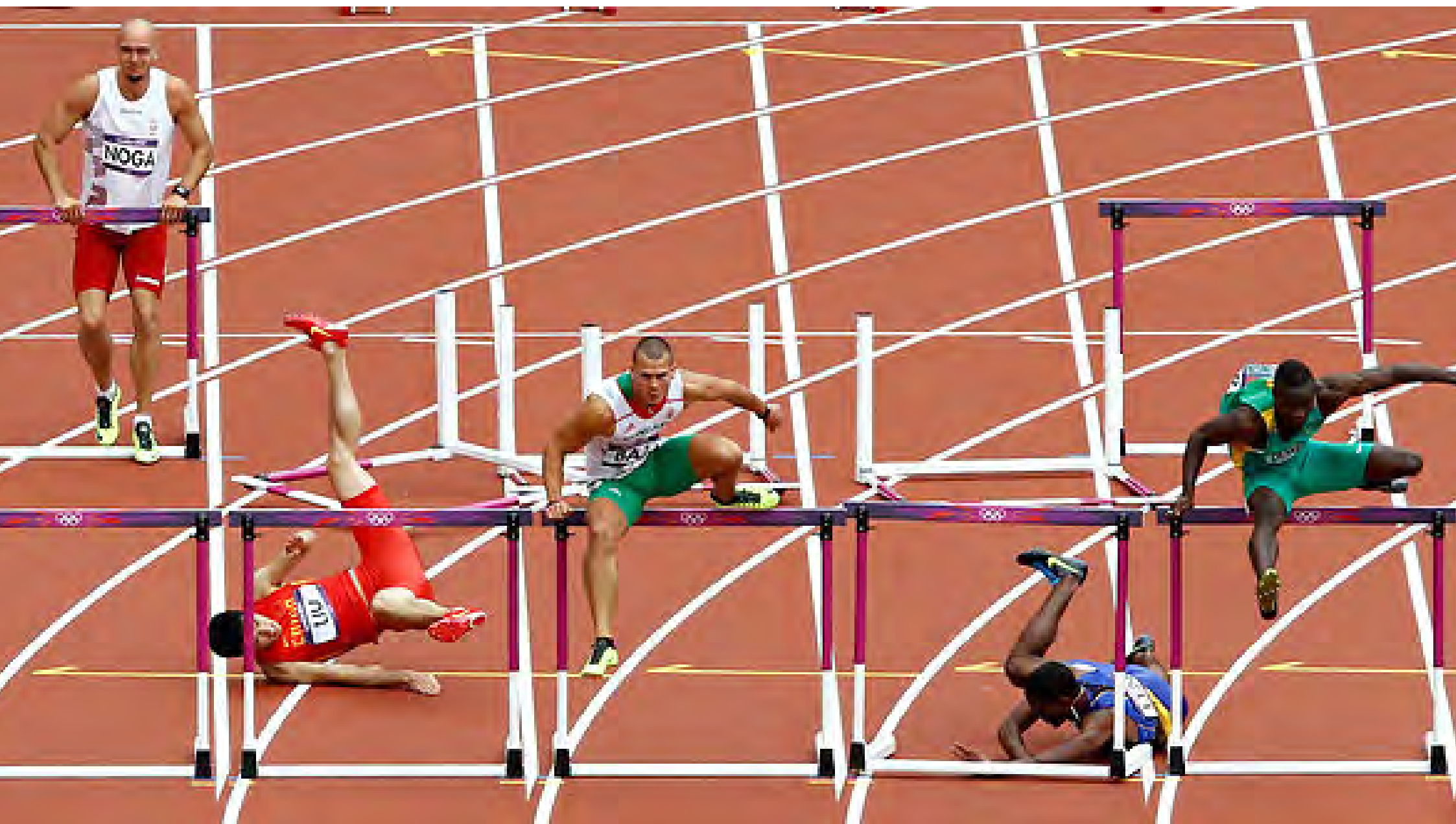
AEG



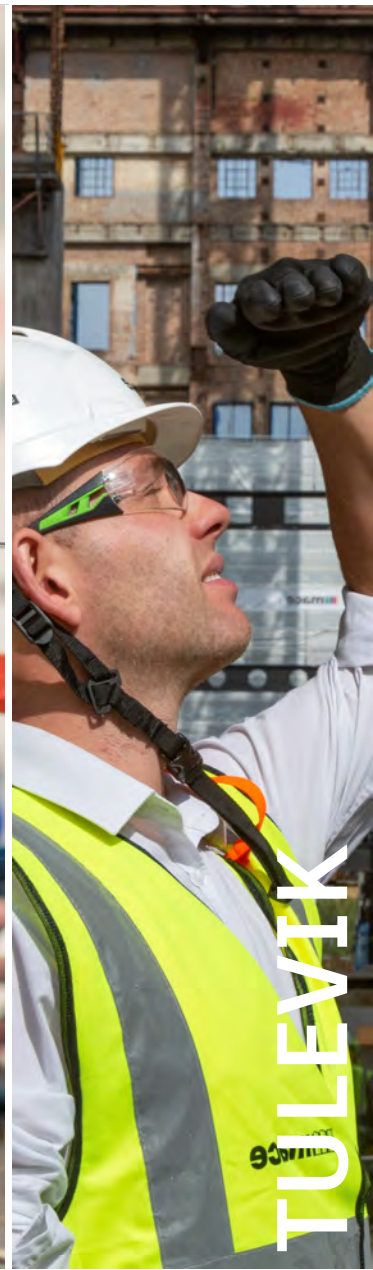
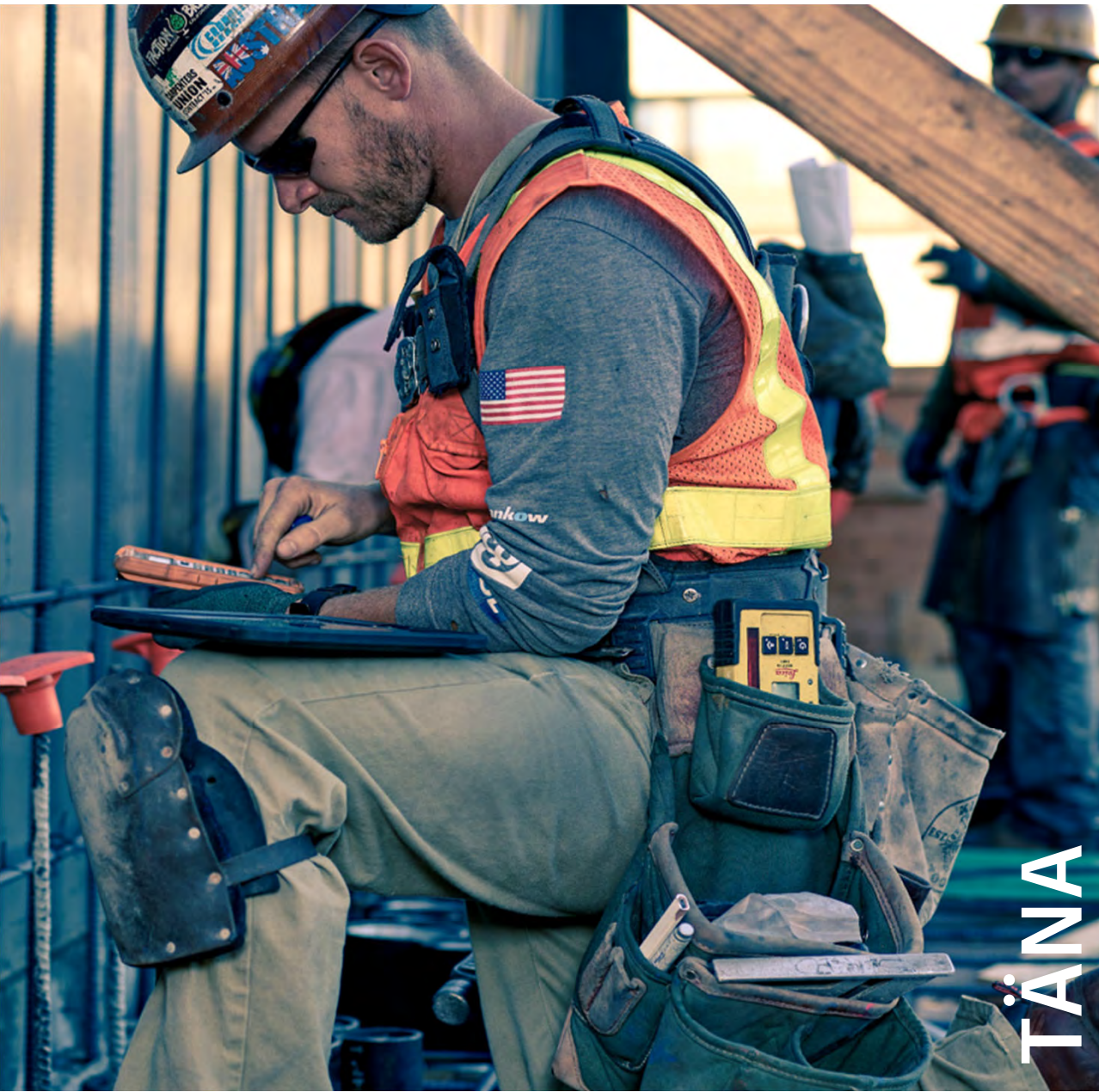


# Innovatsioonitrepp

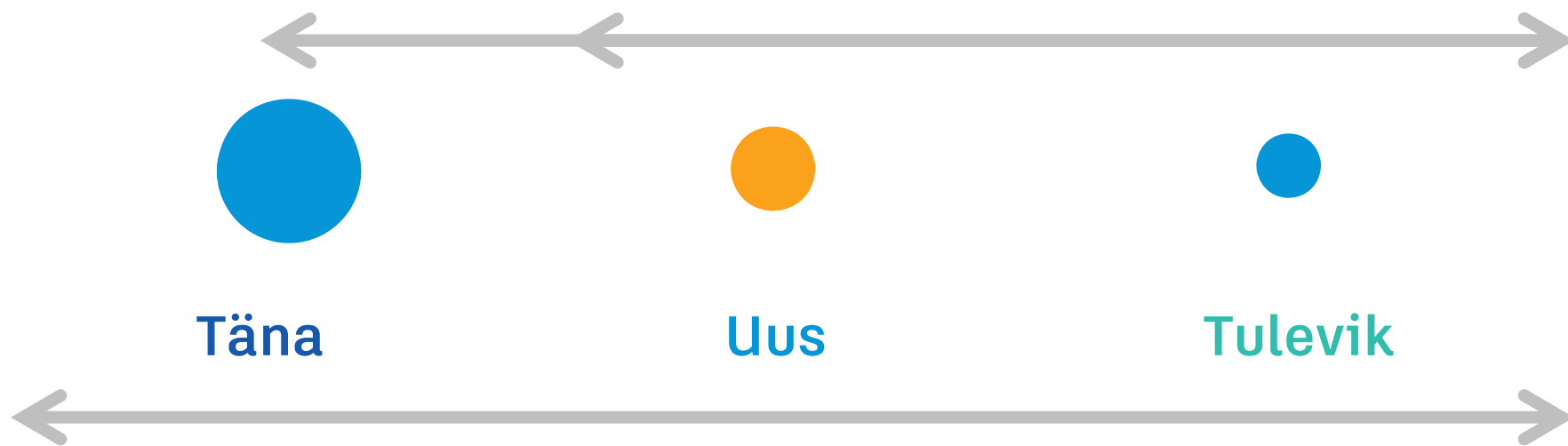






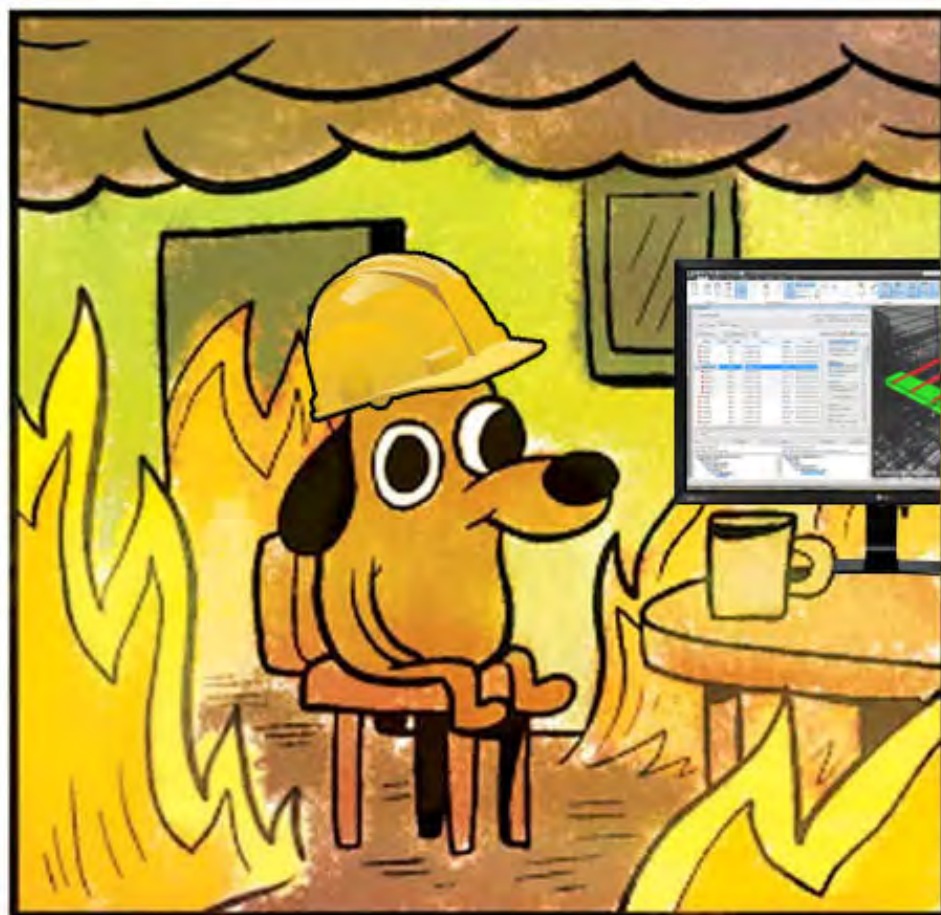


# Innovatsiooni Juhtimine













“ You can't manage what you  
can't measure

*- Peter Drucker*



# DIGITISE

•

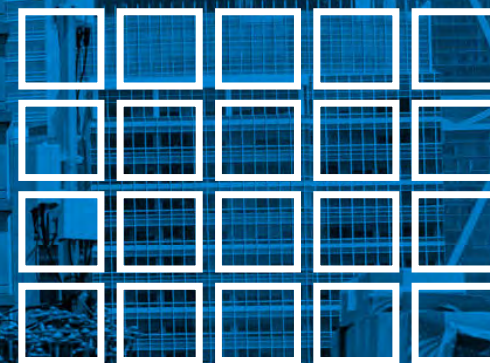


# Andmete Kvaliteet



Erinevad  
Keskkonnad

VS



Struktureeritud  
Andmed



# ROHKEM ANDMEID JA DIGITAALSEID PROTSESSE

## Iga Päev...

Tuhandeid probleeme  
ja muudatusi

## 95%

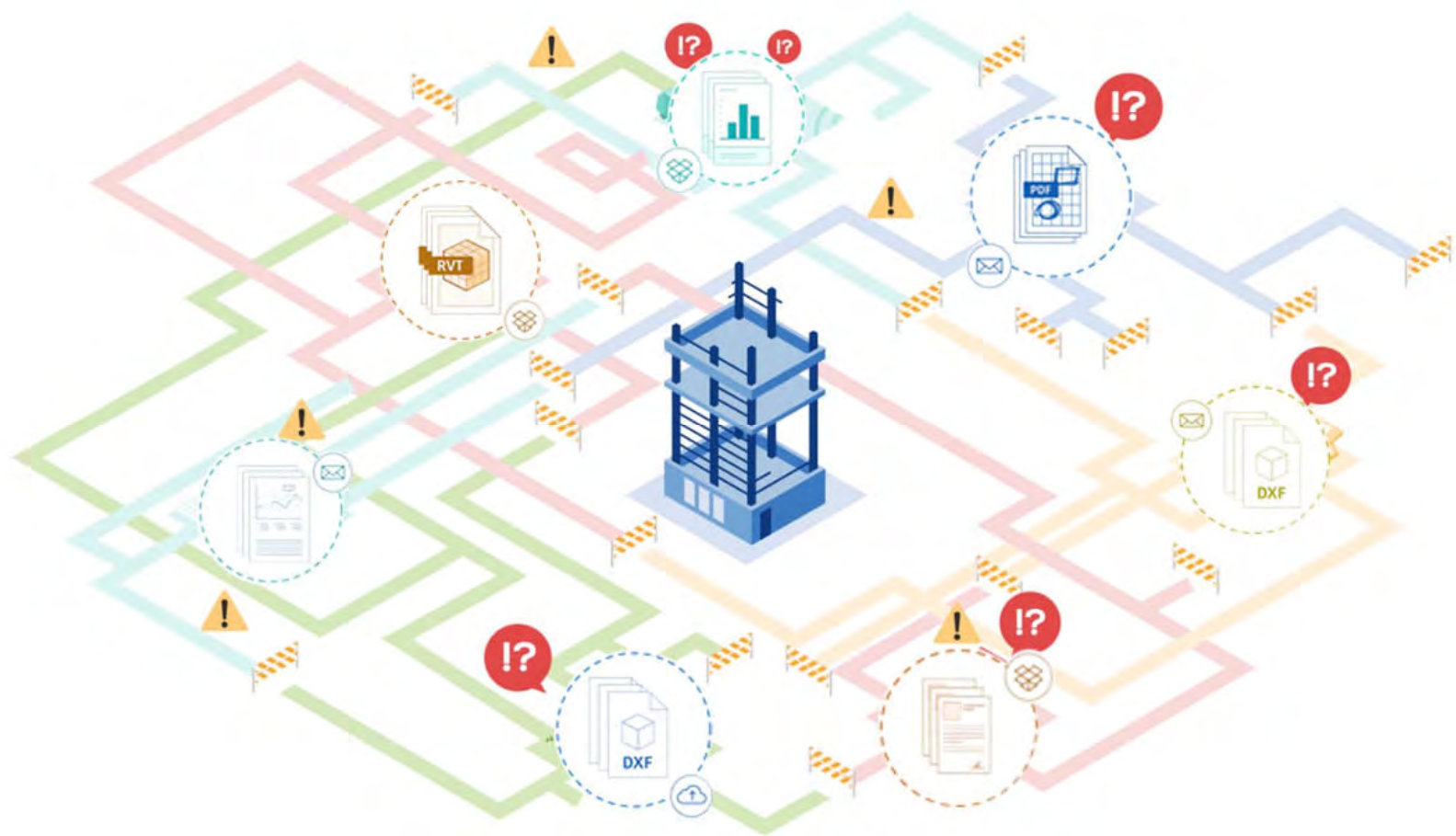
kogu  
andmetest jääb  
ehitusprojektidel  
efektiivselt kasutamata

## 30%

Disaini ja Ehituse käigus  
loodud andmetest ei jõua  
projekti omanikeni







Reaktioon  
või Ennetus





EHITUSPLATS

PROJEKTI  
MEESKOND

KVALITEEDI-  
KONTROLL

EHITUSVEAD





24 DISAINI KÄIGUS

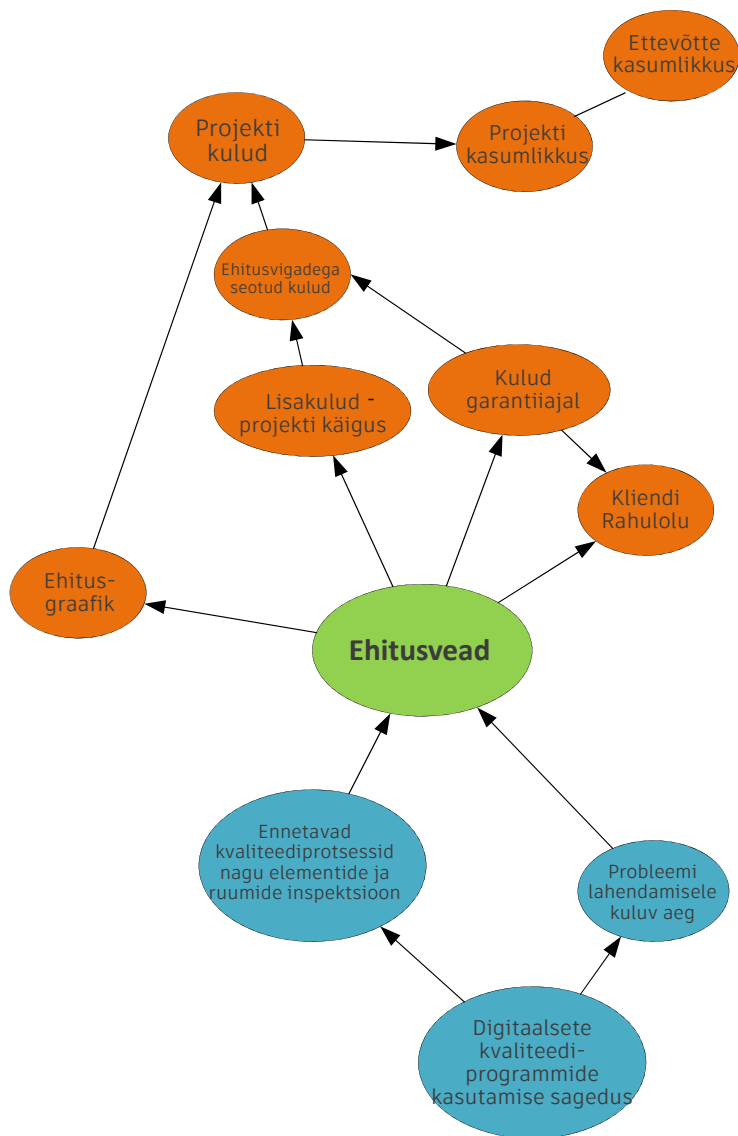
240 E HITUSE KÄIGUS

2400 E HITUSE LÕPUS

240 000 KASUTUSE KÄIGUS

\*USD





- Probleemide arv tüübi järgi
- Probleemide arv staatuse kategooria järgi (Lahendatud-Lahendamata-Ülevaatluseks valmis)
- Probleemide arv ettevõtte-alltöövõtja kohta
- Probleemide avastamise tüüp (ülevaatus, piltide analüüs, jne)
- Probleemide tõstatamise sagedus/ kuus
- Lahendamiseks kuuluv aeg sõltuvalt vea kategooriast (Kriitiline kuni madal tähtsus)
- Lahendamiseks kuuluv aeg regionaalselt
- Lahendamiseks kuluv aeg iga projekti kohta
- Keskmine tõenäosus, et lahendus tuleb päeva/kuu/nädala jooksul
- Probleem avastatud ennatlikult või tagantjäre
- Ennatlike probleemide tõstatamine / kuus
- Kvaliteedikontrolli vormide täitmise kogus projekti ja projekti tüübi kohta
- Kvaliteedikontrolli vormide arv regionaalselt
- Kvaliteedikontrolli vormide arv vormi tüübi kohta.
- % probleeme, mis avastati kvaliteedikontrolli käigus
  - Igas Regioonis
  - Projektil
  - Vormi tüübi kohta



USK



SEOS



PÕHJUSLIKKUS



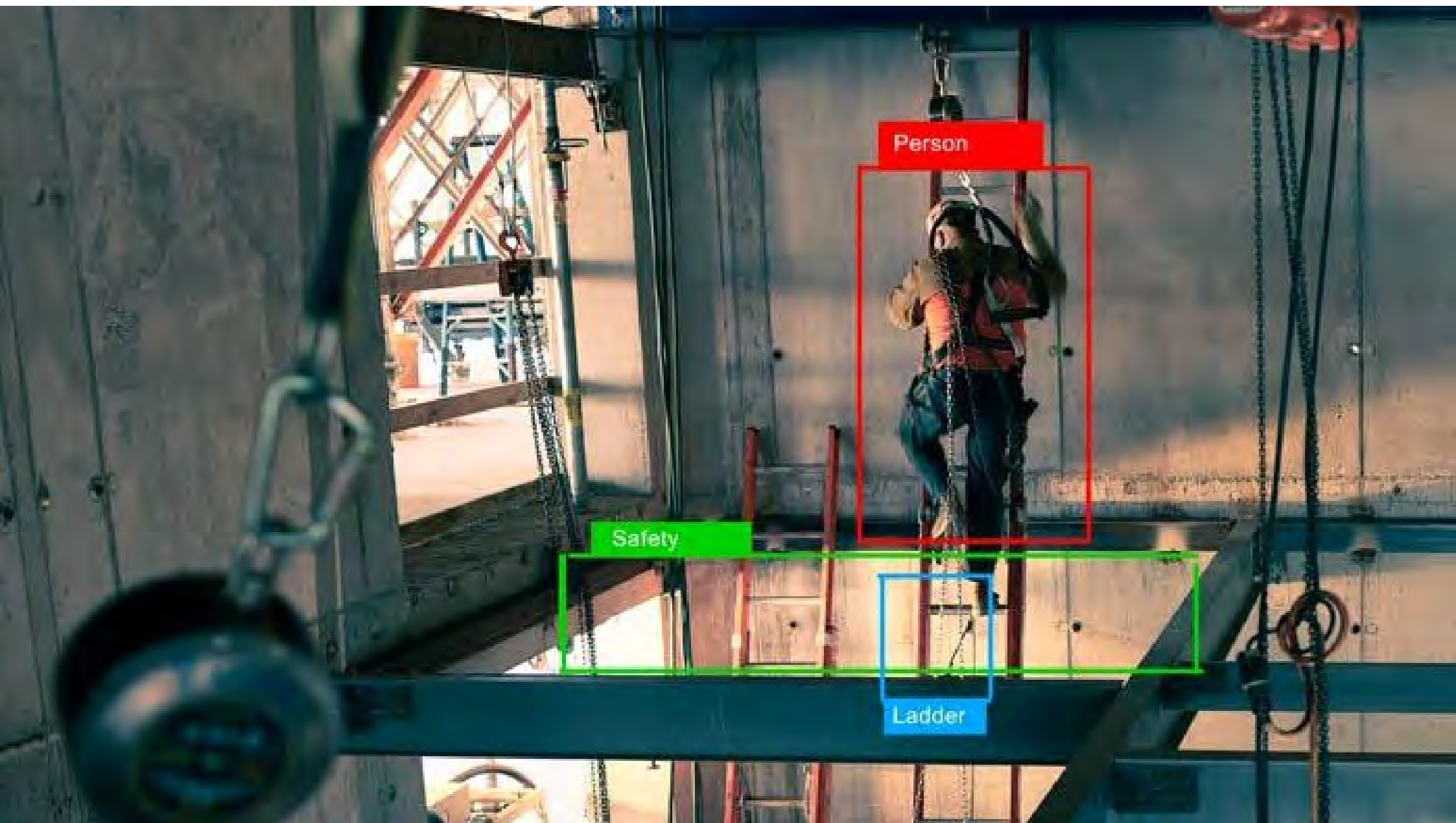


**DIGITISE**

**INTEGRATE**







Person

Safety

Ladder



**DIGITISE**

**INTEGRATE**

**PREDICT**







An aerial photograph of a large-scale construction project, possibly a residential or commercial development. The image is heavily tinted with a monochromatic blue color. In the center, there is a large, irregular pile of construction materials, including what appears to be bricks or blocks. To the left, there are several white vans parked in a row. In the foreground, there are two large, rectangular concrete structures, possibly foundations or early-stage building frames. The background shows more construction activity and some existing buildings. The overall scene conveys a sense of active development and infrastructure work.

150 Millionit Probleemi

30 000 Projekti



<https://bim360resources.autodesk.com/featured-content/bam-machine-learning-story>



# Mis on Teie Järgmine Samm?

?





Autodesk and the Autodesk logo are registered trademarks or trademarks of Autodesk, Inc., and/or its subsidiaries and/or affiliates in the USA and/or other countries. All other brand names, product names, or trademarks belong to their respective holders. Autodesk reserves the right to alter product and services offerings, and specifications and pricing at any time without notice, and is not responsible for typographical or graphical errors that may appear in this document.

© 2018 Autodesk. All rights reserved.