



Collaboration & Data Management

# Cloud based Collaboration

Thomas Gregersen

Sr. Technical Sales Specialist AEC NE

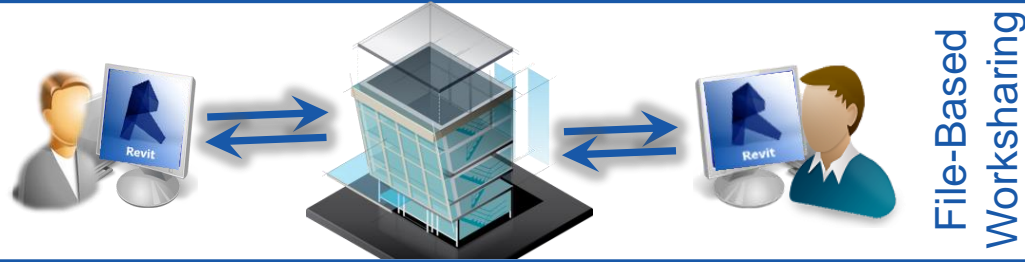


43,252,003,274,489,856,000

# Revit Multi-User Support | Scenario Support

## Team

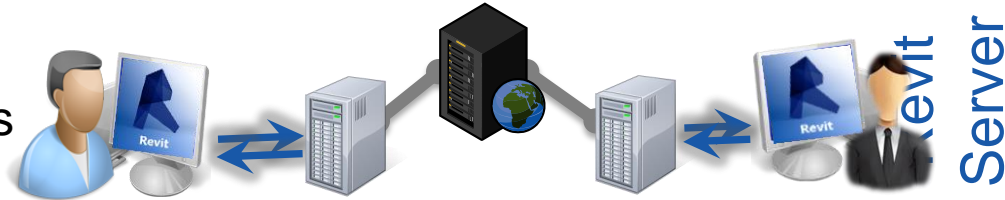
Single Location  
Firewalled



File-Based  
Worksharing

## Enterprise

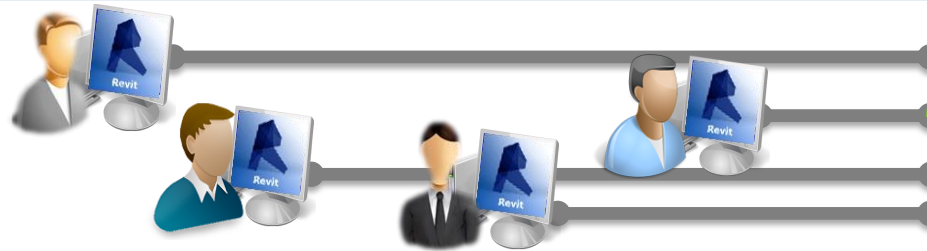
Multiple Locations  
Firewalled



Server

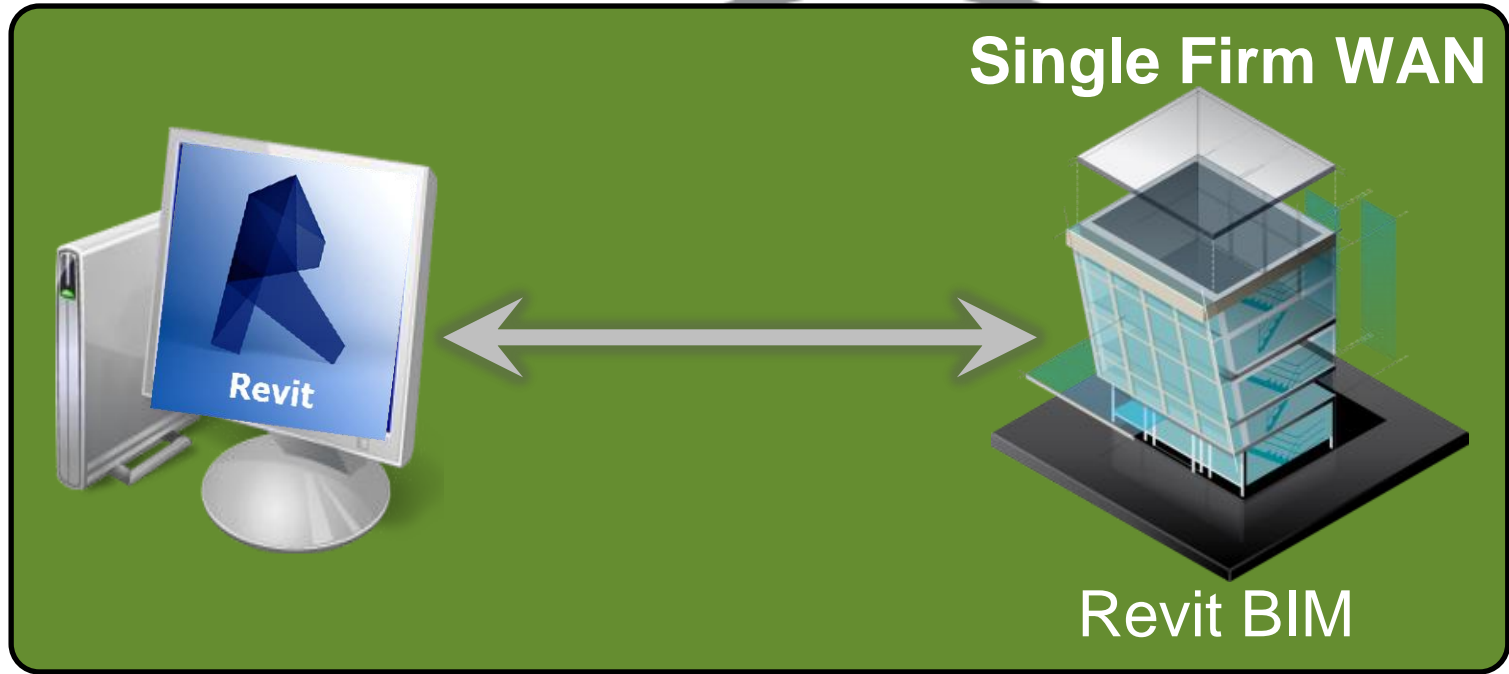
## Multi-Firm

Multiple Companies  
Multiple Locations  
Managed Access



Skyscraper  
Communicator

# BIM Lives in the Cloud

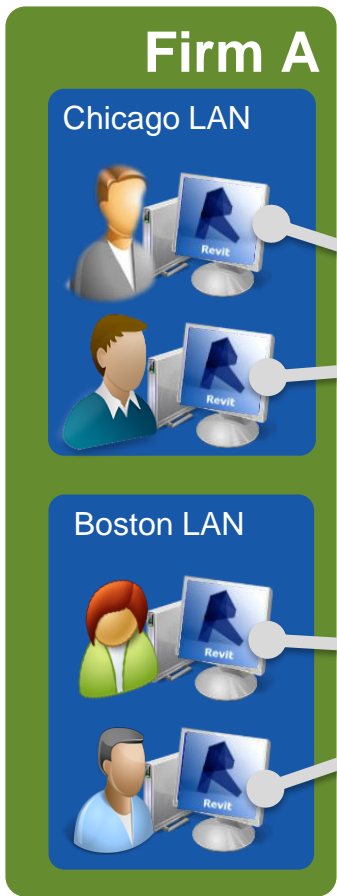


A360 Collaboration for Revit



Access the Project Data

 AUTODESK



# Cloud Worksharing | Key Value

- ✓ Multi-firm concurrent authoring



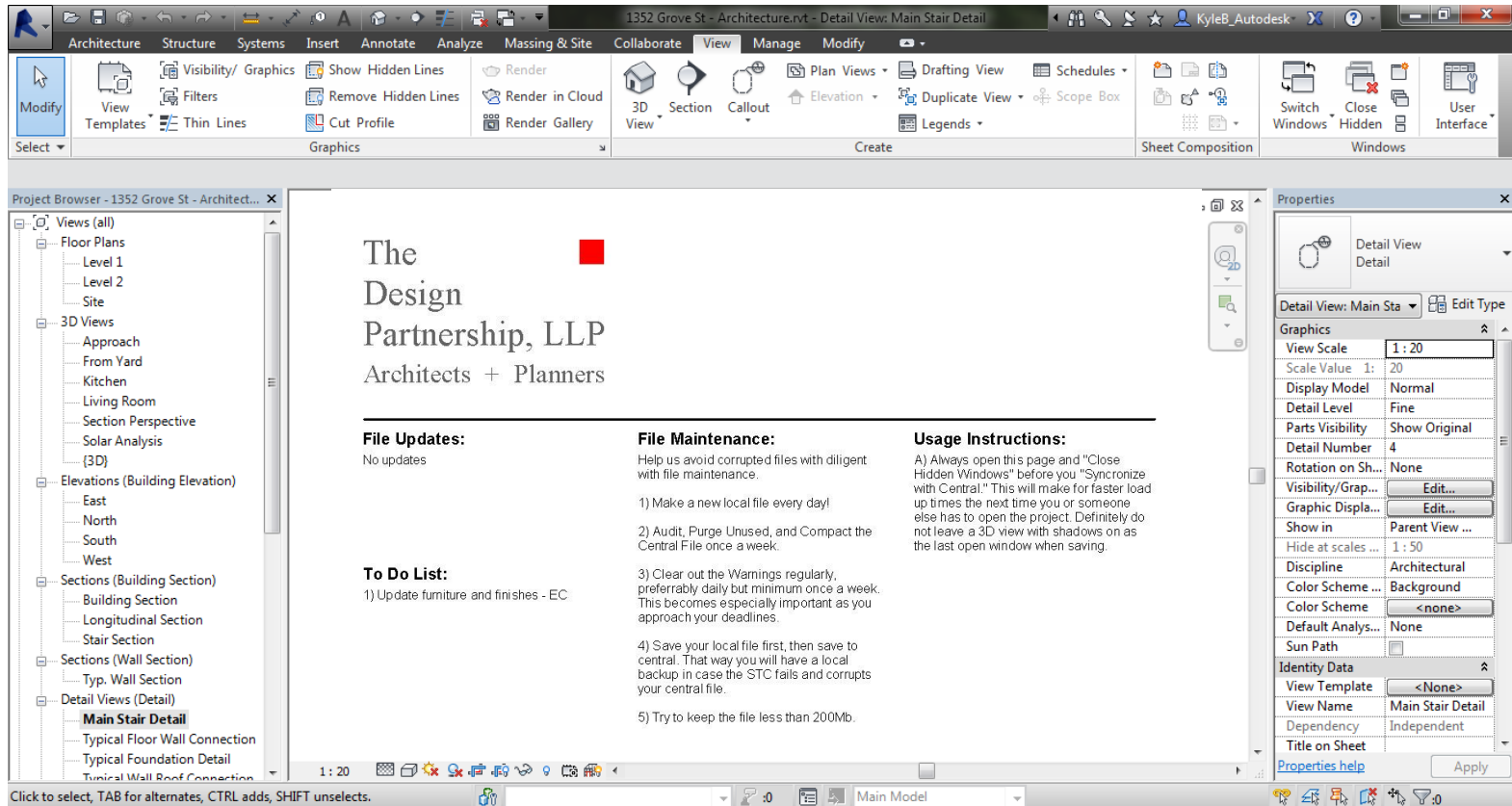




# Enhance Communication



# Revit Today – Not Suited for Communication



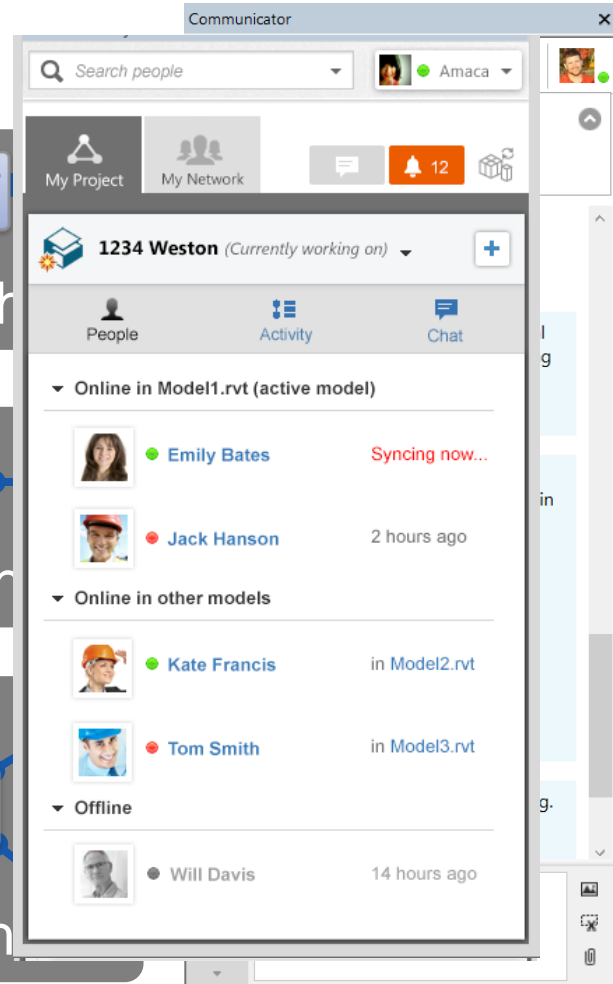
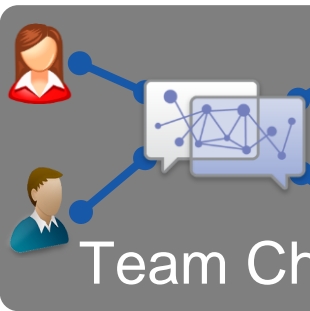
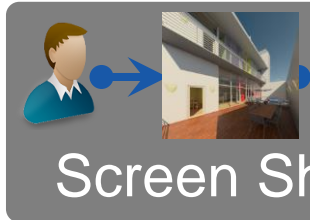
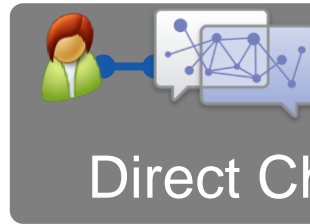
Click to select, TAB for alternates, CTRL adds, SHIFT unselects.

# Communicator | Market Precedent



# Communicator | Key Value

- ✓ Multi-firm synchronous communication
- ✓ Contextual awareness
- ✓ Integrated Revit Worksharing activity feed





Connect the Entire Team

 AUTODESK



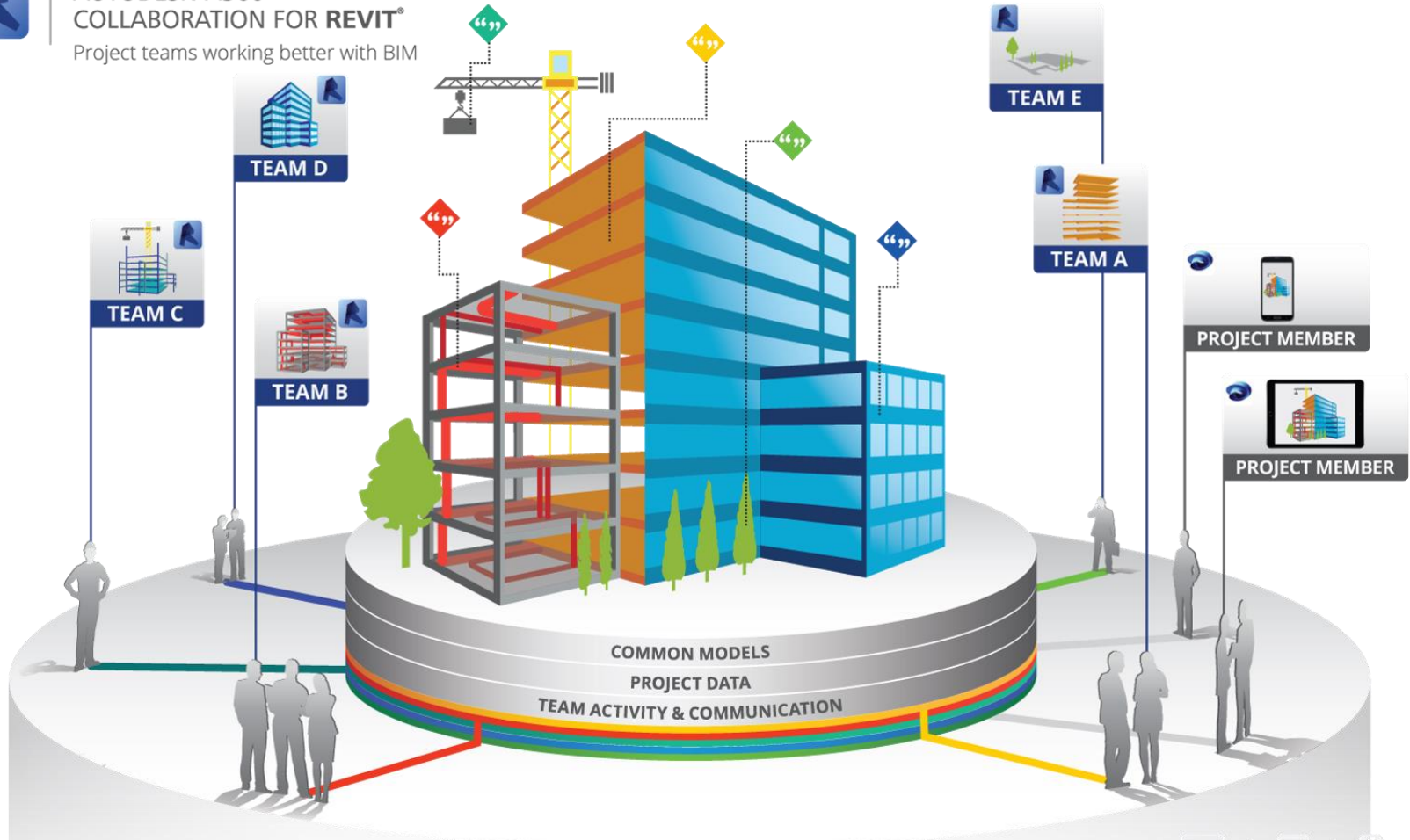






# AUTODESK® A360 COLLABORATION FOR REVIT®

Project teams working better with BIM



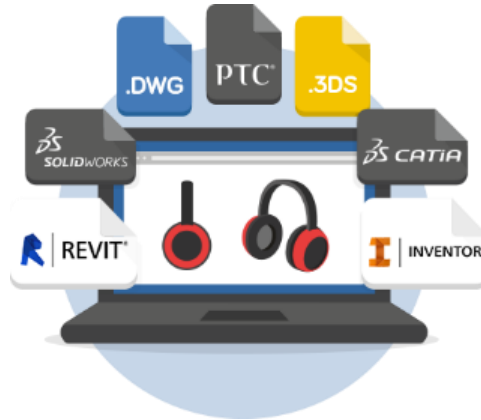
A360



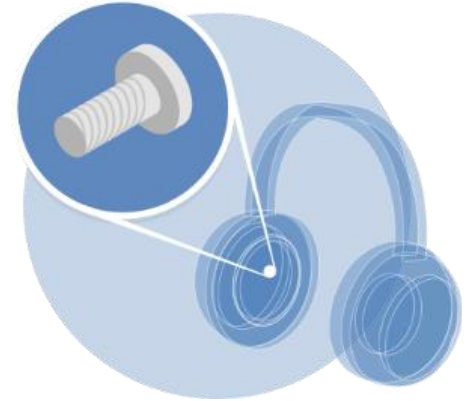
A360 enables **design & engineering** centric project teams to work efficiently together in **one central workspace**



SHARE



VIEW



SEARCH



# Documents in the Cloud

# General Document Management

- Thumbnail, List, and Registry Modes
  - Dynamic Folders
  - Custom Attributes
  - Filter and Sort
  - Presets
- Access control
  - Role, company and user
- Version control & Sets



# General Document Management

- Shortcuts
- Auditable history and rollback
- Notification
- Federation
  - Box
  - Buzzsaw
  - A360
  - LAN/WAN



# General Document Management

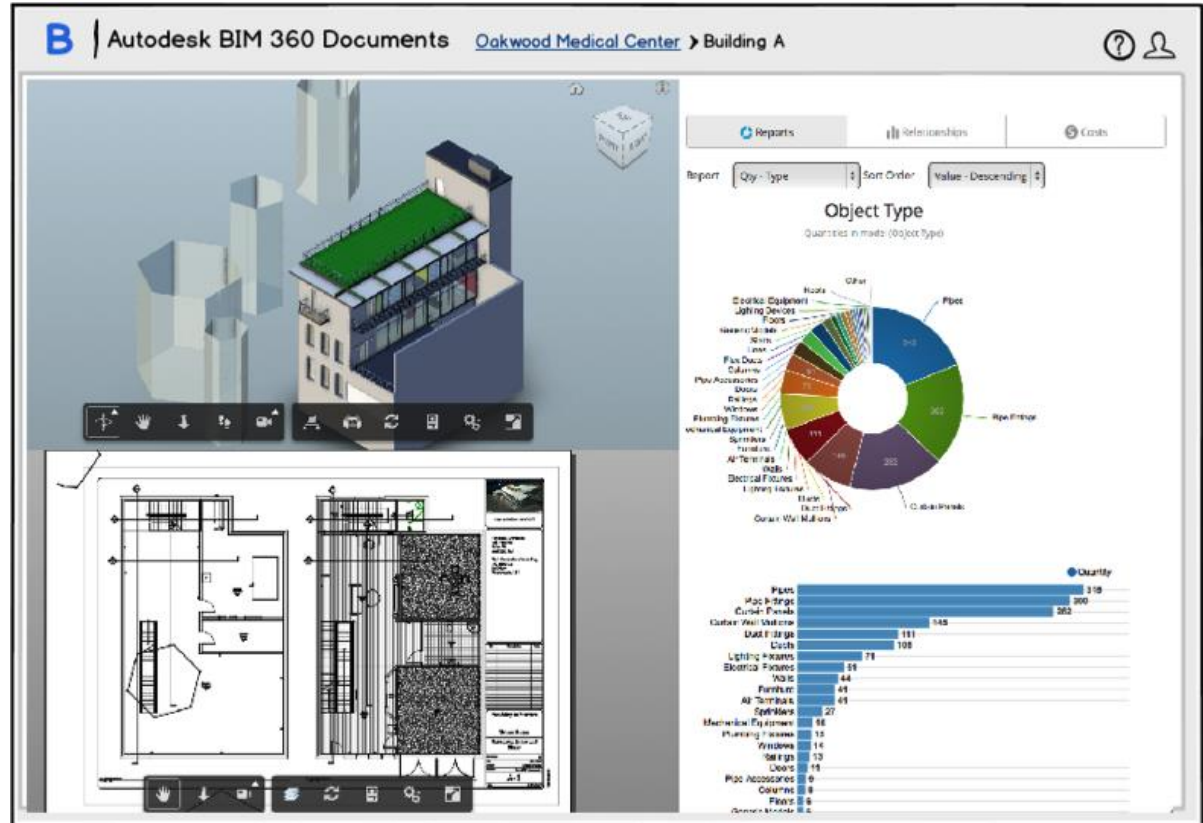
- Approval Process
- Connected Desktop
  - No special preparation required
  - Drive letter mapping, caching and delta transfer
  - Reference extraction
- Send temporary link
- Access via browser, tablet and phone

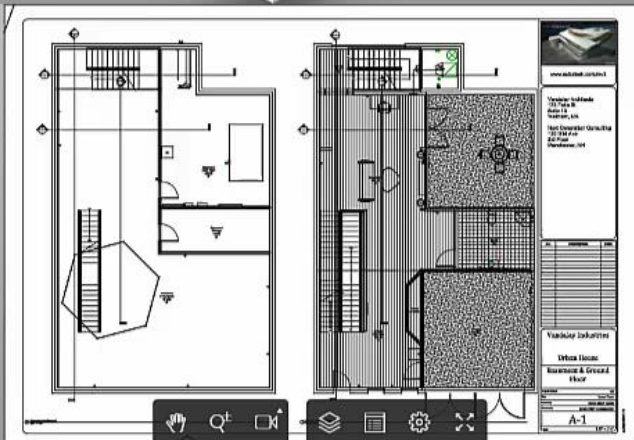




# System Integration Sample App

- Linked data
  - 2D and 3D
  - Extracted data
- Model quality
  - Version match
  - Show sheet layer
- Show on sheet

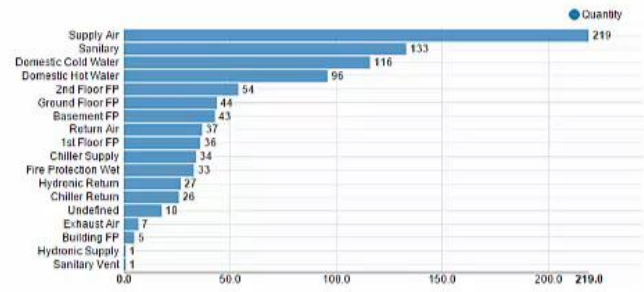
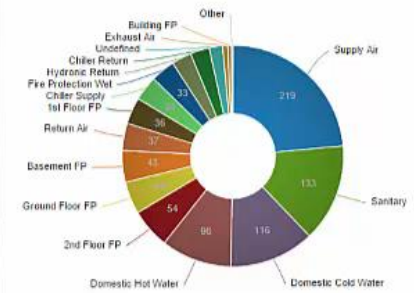




Report: Qty - System Type | Sort Order: Value - Descending

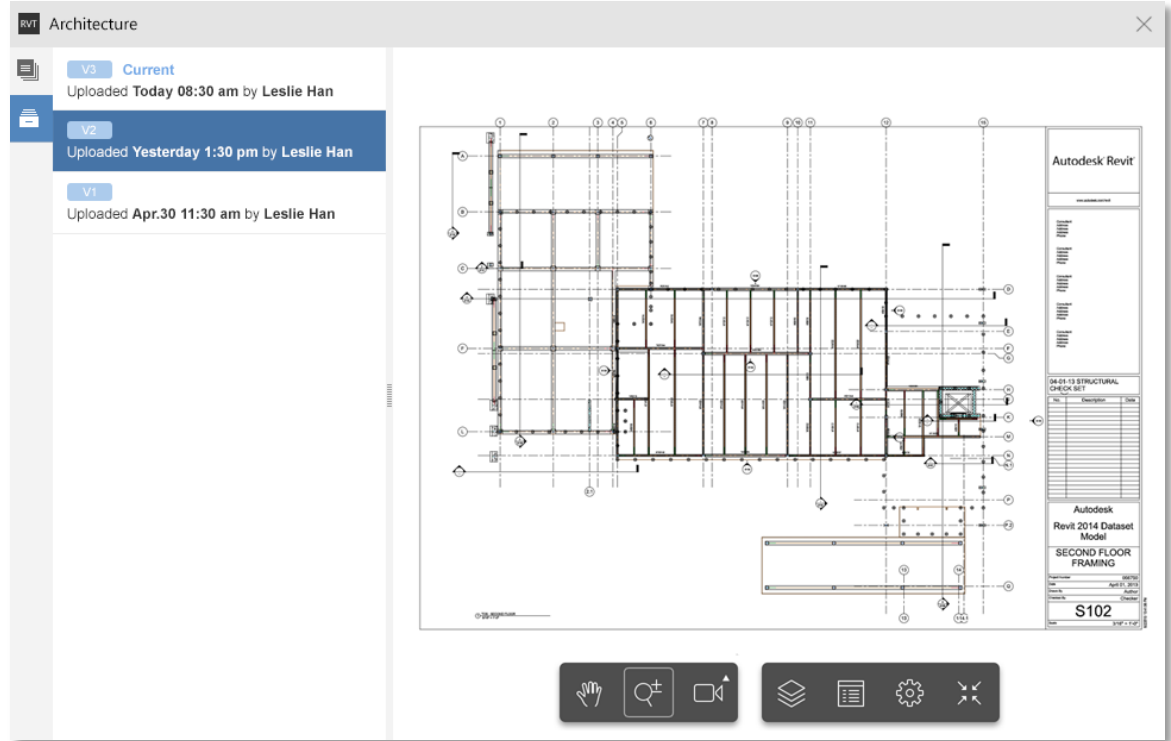
### System Type

Quantities in model (System Type)



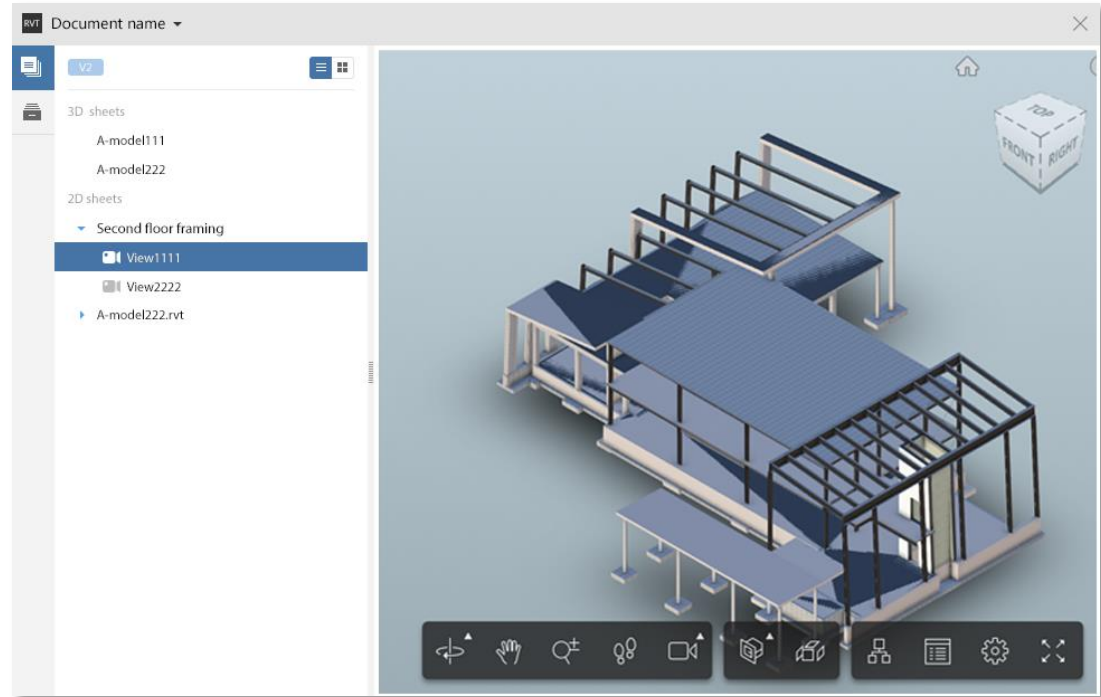
# 2D Drawings

- Direct publish from AutoCAD & Revit
- [Markup & Issue Management](#)
- [Name & ID extraction](#)
- Callout linking
- Aggregation – sheet stacking
- Native storage through drive mapping
  - Understands references



# Models

- Direct publish from AutoCAD & Revit
- Large number of formats supported (A360 list + NW list)
- Extraction of sheets
- Extraction of properties
- Aggregation
- Native storage through drive mapping
  - Understands references





Autodesk is a registered trademark of Autodesk, Inc., and/or its subsidiaries and/or affiliates in the USA and/or other countries. All other brand names, product names, or trademarks belong to their respective holders. Autodesk reserves the right to alter product and services offerings, and specifications and pricing at any time without notice, and is

not responsible for typographical or graphical errors that may appear in this document.  
© 2014 Autodesk. All rights reserved.